

**DT40**



**DT131**

## DOTAZIONE STANDARD

|                                                                             |
|-----------------------------------------------------------------------------|
| Barre paraciclisti                                                          |
| Cesto - Alluminio 2000x800x1100 mm, portata max 300 kg                      |
| Comando avvio/arresto motore dal cesto                                      |
| Comando dal cesto per segnalatore acustico                                  |
| Connessione elettrica 230V nel cesto                                        |
| Contaore                                                                    |
| Controllo anticollisione tra bracci e cabina del veicolo                    |
| Dispositivo di stabilizzazione automatica                                   |
| Impianto idraulico a filtraggio differenziato con filtri ad alta efficienza |
| Livella multiassiale                                                        |
| Luci intermittenti sugli stabilizzatori                                     |
| Operatività completamente elettronica                                       |
| Pompa di emergenza manuale                                                  |
| Rotazione cesto $\pm 90^\circ$                                              |
| Rotazione torretta 1440°                                                    |
| Schermo CAN-bus 3.5" in cabina                                              |
| Sistema di controllo via CAN-bus                                            |
| Stabilizzatori maggiorati (750 mm) con piastre in legno                     |
| Teleassistenza remota in tempo reale (CRSS)                                 |
| Traverse anteriori e posteriori estensibili idraulicamente                  |
| Valvole di blocco flangiate sui cilindri                                    |
| Verniciatura - Braccio telescopico:<br>Blu RAL 5013 o Bianco RAL 9010       |
| Verniciatura - Cilindri, parte aerea e pistoni:<br>Bianco RAL 9010          |
| Verniciatura - Telaio: Blu RAL 5013 o Nero                                  |

## STANDARD EQUIPMENT

|                                                                        |
|------------------------------------------------------------------------|
| Cyclist protection bars                                                |
| Cage – Aluminium 6'7"x2'7"x3'7", max load 661 kg                       |
| Start/Stop engine from the cage                                        |
| Acoustic warning from the cage                                         |
| 110/120V electric connection in the cage                               |
| Hour counter                                                           |
| Boom and truck cabin anti-collision device                             |
| Automatic stabilization device                                         |
| Fully compensated hydraulic system with high pressure filtering system |
| Multi-axial level                                                      |
| Blinking lights on outriggers                                          |
| Fully electronically operated                                          |
| Emergency hand pump                                                    |
| Cage rotation $\pm 90^\circ$                                           |
| Turret rotation 1440°                                                  |
| Display CAN-bus 3.5" on the cab                                        |
| CAN-bus control system                                                 |
| Extended stroke outriggers (2'6") with wooden pads                     |
| Remote management and diagnostic software (CRSS)                       |
| Rear and front beams automatic hydraulic exit                          |
| Flanged lock valves on cylinders                                       |
| Painting - Telescopic booms:<br>Blue RAL 5013 or White RAL 9010        |
| Painting - Cylinders, turret and pistons:<br>White RAL 9010            |
| Painting - Mainframe: Blue RAL 5013 or Black                           |



**ACCESSORI DISPONIBILI**

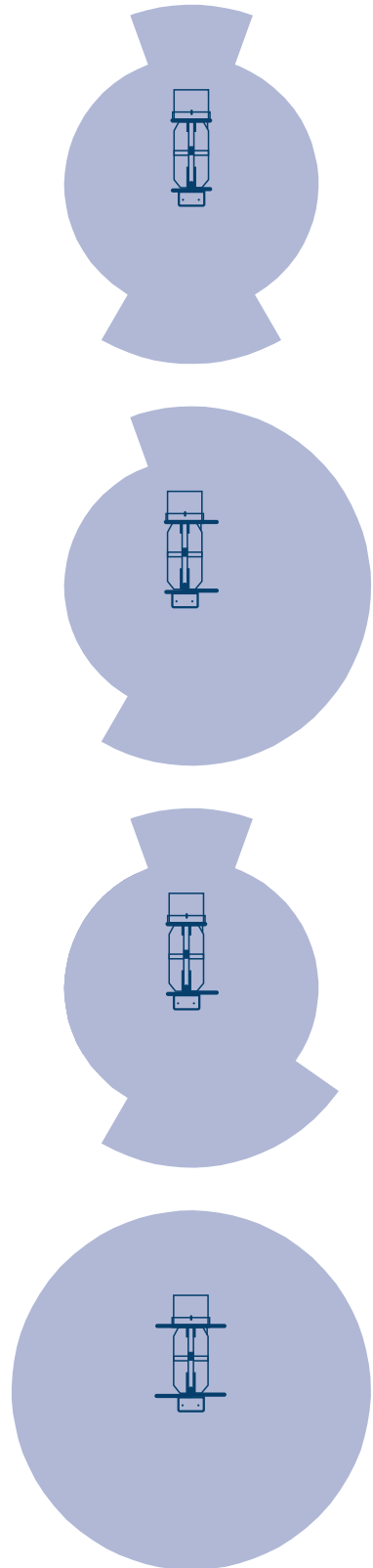
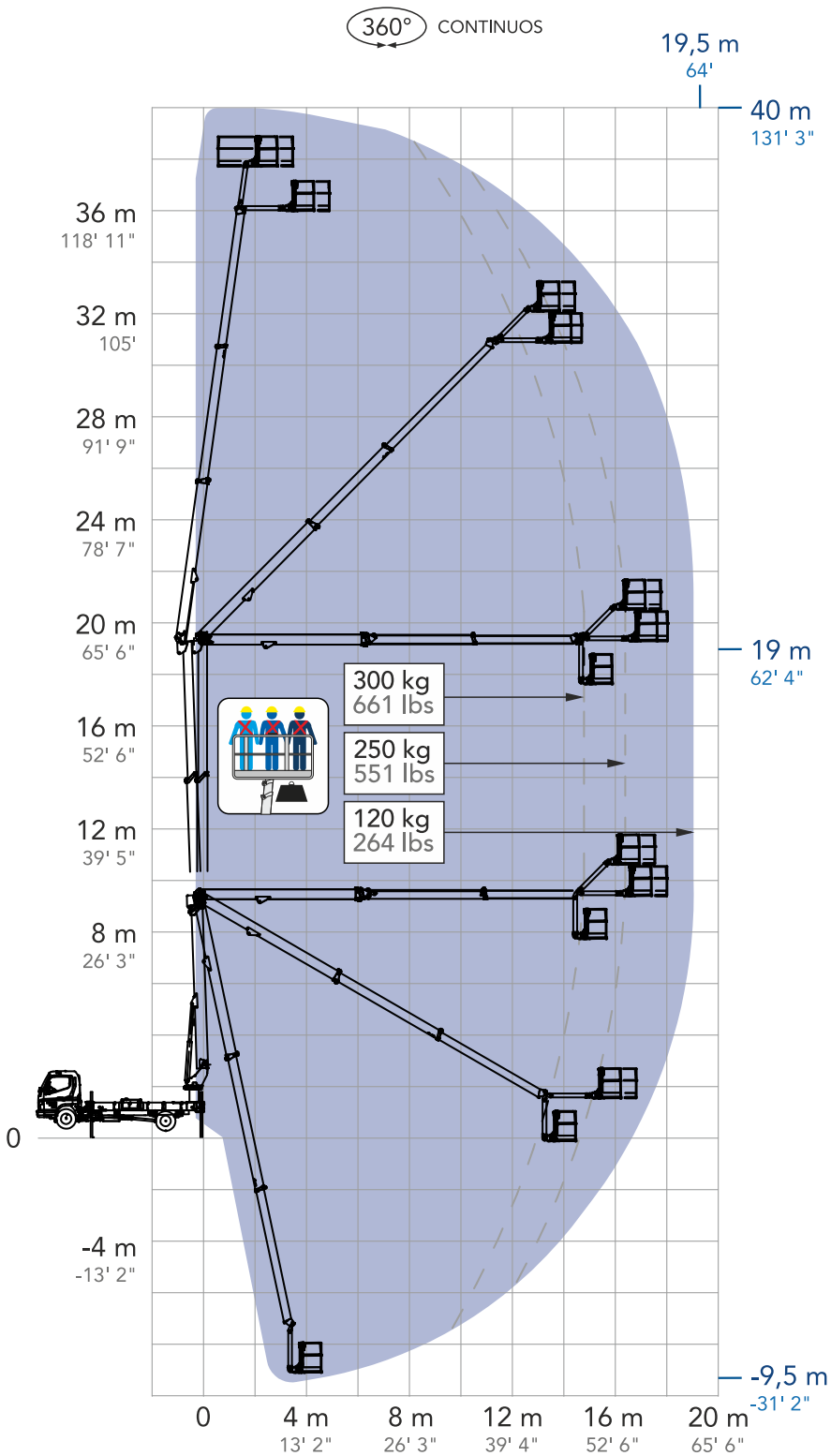
|                                                                                                      |
|------------------------------------------------------------------------------------------------------|
| Anemometro                                                                                           |
| Argano elettrico, portata massima 300 kg                                                             |
| Camion con guida a destra                                                                            |
| Camion diverso da veicolo standard                                                                   |
| Cassetta degli attrezzi                                                                              |
| Cesto - Estendibile 2000/2400x800x1100 mm, portata massima 270 kg                                    |
| Cesto - Vetroresina 800x600x1100 mm, portata massima 120 kg                                          |
| Cesto - Vetroresina 1200x620x1100 mm, portata massima 280 kg                                         |
| Cesto - Carico materiali con sponde abbattibili 1400x700x550/2430x1166x50 mm, portata massima 290 kg |
| Cofanature per trasporto materiali                                                                   |
| Comandi di stabilizzazione dal cesto                                                                 |
| Connessione aria/acqua tra cesto e torretta, pressione max 100 bar                                   |
| Dispositivo anti-collisione a protezione del cesto con tecnologia sonar                              |
| Dispositivo di chiusura automatica                                                                   |
| Doppia postazione di stabilizzazione a terra (8 tasti)                                               |
| Elettropompa monofase con caricabatteria tampone                                                     |
| Filocomando a terra da 5 m                                                                           |
| Gancio di sollevamento, portata massima 340 kg                                                       |
| Imbracatura di sicurezza                                                                             |
| Impianto interfonico fisso terra/cesto                                                               |
| Interruttore magnetotermico di protezione sulla linea elettrica                                      |
| Linea cesto con spine/prese 110V (extra USA)                                                         |
| Luci ingombro posteriori                                                                             |
| Pedale uomo morto al cesto                                                                           |
| Pedale uomo morto al cesto e pulsante uomo morto ai controlli a terra                                |
| Piastre di appoggio a terra con relativo porta piastre                                               |
| Radiatore olio idraulico                                                                             |
| Radiocomando                                                                                         |
| Radiocomando nel cesto + postazione fissa a terra                                                    |
| Rotolampada magnetica                                                                                |
| Scritte adesive personalizzate                                                                       |
| Software per la gestione della macchina da remoto                                                    |
| Spazzole nei bracci                                                                                  |
| Spondine                                                                                             |
| Verniciatura speciale - Telaio                                                                       |
| Verniciatura speciale - Parte aerea, cilindri e stabilizzatori                                       |

**OPTIONS & ACCESSORIES**

|                                                                                                    |
|----------------------------------------------------------------------------------------------------|
| Anemometer                                                                                         |
| Electric winch, max load 661 lbs                                                                   |
| Right hand drive truck                                                                             |
| Mounting on different truck                                                                        |
| Tool box                                                                                           |
| Cage - Extendable 6'8"/7'11"x2'7"x3'7", max load 595 lbs                                           |
| Cage - Fiberglass 2'7"x2'x3'7", max load 264 lbs                                                   |
| Cage - Fiberglass 3'11"x2'x3'7", max load 617 lbs                                                  |
| Cage - Material handling with collapsible sides 4'7"x2'4"x1'10"/7'12"x3'10"x1'8", max load 639 lbs |
| Material locker                                                                                    |
| Stabilization from the cage                                                                        |
| Air/Water connection between cage and turret, max pressure 100 bar                                 |
| Ultrasonic anti-collision alarm for cage protection                                                |
| One-click auto-closing function                                                                    |
| Double stabilization station on the ground (8 keys)                                                |
| Mono-phase electro pump with its buffer battery charger                                            |
| 16' length wired controller, control at ground                                                     |
| Hoist Hook, max load 750 lbs                                                                       |
| Safety harness                                                                                     |
| Fixed intercom ground/cage                                                                         |
| Circuit breaker in the cage                                                                        |
| Basket line with 110V plugs/sockets (extra USA)                                                    |
| Rear clearance lights                                                                              |
| Dead man pedal in the cage                                                                         |
| Dead man pedal in the cage and dead man switch on ground controls                                  |
| Outrigger pads along with corresponding pad holder                                                 |
| Hydraulic oil radiator                                                                             |
| All function radio control                                                                         |
| Radio control on the cage + fixed control station at ground                                        |
| Magnetic xenon beacon                                                                              |
| Customized stickers with customer logo                                                             |
| Remote management software                                                                         |
| Anti-debris brushes on booms                                                                       |
| Aluminium side walls                                                                               |
| Special painting - Mainframe                                                                       |
| Special painting - Upper part, cylinders and outriggers                                            |

**STANDARD COMPLIANCE**

|                                                   |
|---------------------------------------------------|
| ANSI 92.20                                        |
| UNI EN 280                                        |
| CSA B354.6                                        |
| CE                                                |
| Crane certification (EN 12999 standard certified) |



"depending on chassis"

## MISURE

|                      |                                                   |         |
|----------------------|---------------------------------------------------|---------|
| <b>A</b>             | Lunghezza cesto                                   | 800 mm  |
| <b>B</b>             | Profondità cesto                                  | 2000 mm |
| <b>C</b>             | Altezza della macchina                            | 3100 mm |
| <b>D</b>             | Lunghezza della piattaforma                       | 7480 mm |
| <b>E</b>             | Lunghezza totale                                  | 8060 mm |
| <b>F</b>             | Larghezza della macchina                          | 2250 mm |
| <b>G<sub>1</sub></b> | Larghezza con stabilizzatori posizione intermedia | 2900 mm |
| <b>G</b>             | Larghezza stabilizzatori posizione estrema        | 4900 mm |

\* le misure variano in base al telaio

## MEASUREMENTS

|                        |            |
|------------------------|------------|
| Cage length            | 2 ft 8 in  |
| Cage width             | 6 ft 7 in  |
| Height                 | 10 ft 2 in |
| Platform length        | 24 ft 6 in |
| Overall length         | 26 ft 5 in |
| Width                  | 7 ft 5 in  |
| Width - outriggers in  | 9 ft 6 in  |
| Width - outriggers out | 16 ft      |

\* measurements depend on chassis

## PRESTAZIONI

|                   |              |
|-------------------|--------------|
| Altezza di lavoro | 40 m         |
| Sbraccio laterale | 19,5 m       |
| Punto di scavalco | 19 m         |
| Lavoro negativo   | - 9,5 m      |
| <b>Peso</b>       | <b>7,5 T</b> |

## PERFORMANCE

|                                    |                  |
|------------------------------------|------------------|
| Working height                     | 131 ft 3 in      |
| Horizontal outreach                | 64 ft            |
| Up and over clearance              | 62 ft 4 in       |
| Negative work (below ground level) | - 31 ft 2 in     |
| <b>Weight</b>                      | <b>16534 lbs</b> |



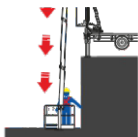
40,00 m  
131 ft 3 in



19,00 m  
62 ft 4 in



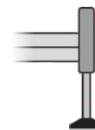
340 kg  
750 lbs



-9,50 m  
-31 ft 2 in



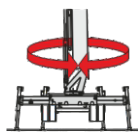
300 kg  
661 lbs



H+H



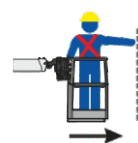
38,00 m  
124 ft 8 in



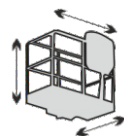
1440°



90°+90°



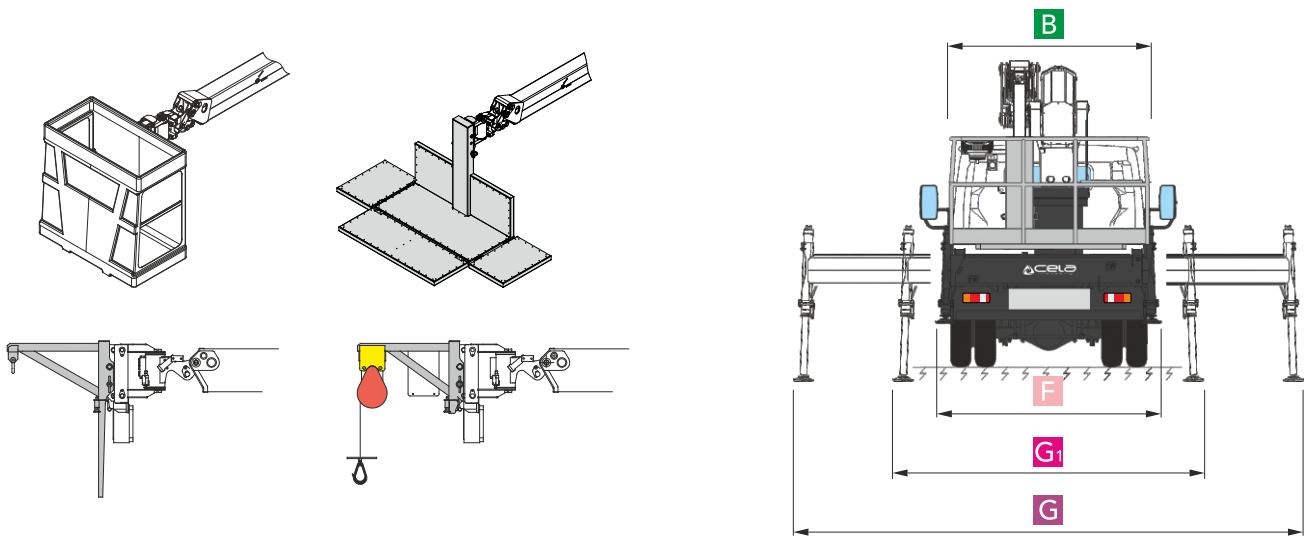
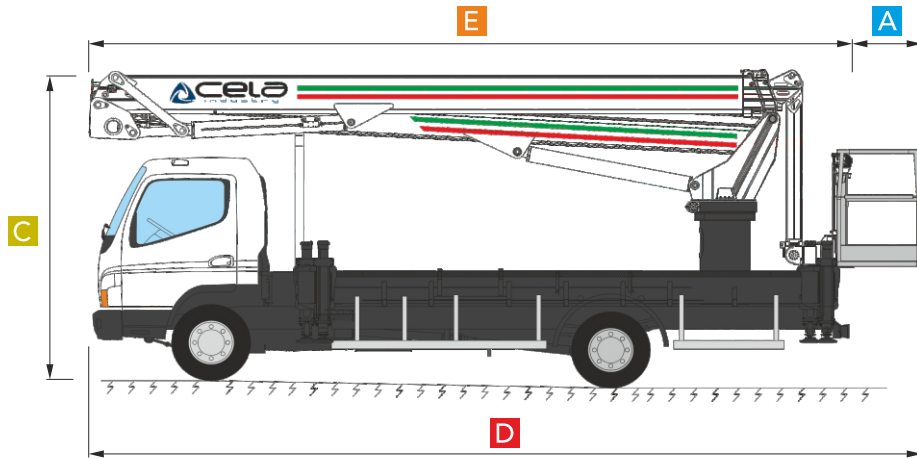
19,50 m  
64 ft



ALUMINIUM  
2,0X0,8X1,1  
6'7"X2'8"X3'7"



ELECTRONIC



**Multipurpose lifting options**

Diagram showing various lifting options for the DT40 truck, including a basket, a platform, a hook, and a hook with a red weight. A central timer icon shows 00:30".

**Sbarco in quota autorizzato**  
Authorized exit at height

Diagram showing the authorized exit at height, with a worker on a platform and a red arrow indicating the exit point.

**Come un ascensore**  
Like an elevator

Diagram showing the truck operating like an elevator, with a worker on a platform and a red arrow indicating the vertical movement.

**Dolci e veloci**  
Smooth and fast

Diagram showing the truck operating smoothly and fast, with a worker on a platform and red arrows indicating the smooth movement.

**Auto stabilizzazione**  
Automatic stabilization

Diagram showing automatic stabilization, with a truck on a slope and red arrows indicating the stabilization mechanism.

**Siamo i più forti**  
We are the strongest

**300 kg**  
661 lbs

**340 kg**  
750 lbs

Diagram showing the truck's strength, with a worker on a platform and a hook with a red weight.

**Sempre al tuo fianco**  
Always by your side

Diagram showing the truck always by your side, with a truck on a slope and a red arrow indicating the truck's position.

**Ti spianiamo la strada**  
We level the road for you

Diagram showing the truck leveling the road, with a truck on a slope and a red arrow indicating the leveling mechanism.